

**2019 Qikiqtani Inuit Association and Nunavut Water Board
Annual Report for the Ege Bay Exploration Program**

**2019 ᖃᓂᓄᓄᓄ ᐃᓂᐃᓄ ᑲᓂᓄᓄᓄᓄᓄᓄ ᐃᓄᓄᓄᓄ ᐃᓄᓄᓄᓄᓄᓄ ᑲᓄᓄᓄᓄᓄ
ᐃᓄᓄᓄᓄᓄ ᐃᓄᓄᓄᓄᓄᓄ ᐃᓄᓄᓄ ᖃᓂᓄᓄᓄᓄᓄ ᐃᓄᓄᓄᓄᓄᓄᓄᓄ**

Water License 2BE-EQE1926 and Land Use Licence II L2-1910
ᖃᓂᓄᓄᓄᓄᓄ ᐃ ᐃᓄᓄᓄᓄᓄ ᓄᐃᓄᓄᓄ 2BE-EQE1926 ᐃᓄᓄᓄᓄ ᐃᓄᓄᓄᓄᓄᓄ ᓄᐃᓄᓄᓄ II L2-1910

Baffinland Iron Mines Corporation

Eqe Bay Project

2019 QIKIQTANI INUIT ASSOCIATION (QIA) AND NUNAVUT WATER BOARD
(NWB) ANNUAL REPORT FOR THE EQE BAY EXPLORATION PROGRAM

REV 0





2020-03-31	0		
		L. Howitt	C. Murray
Date	Rev.	Prepared By	Reviewed and Approved By

TABLE 0: REPORT SUBMISSION SUMMARY

Year of Annual Report	2019
Annual Report Submission Date:	March 31, 2020
Name and contact information of the Baffinland representative responsible for the preparation and approval of the Annual Report.	Christopher Murray Christopher.murray@baffinland.com T: +1 416 364 8820 x5072 C: +1 647 472 9842
The name and contact information of the Baffinland representative that QIA can contact should it have any questions or comments regarding the Annual Report	Christopher Murray Christopher.murray@baffinland.com T: +1 416 364 8820 x5072 C: +1 647 472 9842

2019 QIKIQTANI INUIT ASSOCIATION (QIA) AND NUNAVUT WATER BOARD (NWB) ANNUAL REPORT FOR EXPLORATION ACTIVITIES

EXECUTIVE SUMMARY

This report to the Qikiqtani Inuit Association (QIA) and the Nunavut Water Board (NWB) has been prepared to summarize the 2019 exploration activities conducted under Baffinland Iron Mines Corporation's (Baffinland) Type 'B' Water Licence 2BE-EQE1926 (Type 'B' Water Licence) and the Land Use Licence 2 No. QL2-1910 (Land Use Licence) between the QIA and Baffinland for the Ege Bay Project (the Project).

The scope of the Type 'B' Water Licence focuses on exploration and drilling activities and includes provisions and conditions regarding water use, waste management, construction and operation of satellite camps, exploration and drilling programs, spill contingency and environmental monitoring.

During 2019, there were zero activities carried out under the scope of the Type 'B' Water Licence.

No satellite camps were constructed or operated in 2019, with all personnel involved with the exploration and geotechnical activities being based out of the Mary River Mine Site accommodation camp.

In addition to tracking water use, environmental monitoring conducted in 2019 consisted of recording wildlife sightings in the Project area and documenting instances of Inuit land use in the Project area.

As no development or earthworks has happened in the Project area to date, no reclamation works have been carried out under the Type 'B' Water Licence.

As outlined in the 2020 Work Plan, exploration activities for 2020 have not yet been finalized however it is anticipated that activities at a minimum will include mapping, sampling and geophysical and geochemical surveys of prospects on Baffinland's crown land mineral claims and the IG-03 NTI Exploration Agreement, the installation and operation of a 25-30 person exploration camp and potentially the commencement of exploration drilling on the Exploration Agreement. As additional details for the 2020 exploration program become available, this information will be provided to the NWB, Crown-Indigenous Relations and Northern Affairs Canada (CIRNAC) and the QIA prior to the commencement of activities.

RAPPORT ANNUEL 2019 DE L'ASSOCIATION DES INUITS QIKIQTANI (AQI) ET DE L'OFFICE DES EAUX DU NUNAVUT (OEN) SUR LES ACTIVITÉS D'EXPLORATION

RÉSUMÉ EXÉCUTIF

Ce rapport destiné à l'Association inuite Qikiqtani (QIA) et à l'Office des eaux du Nunavut (OEN) a été préparé pour résumer les activités d'exploration menées en 2019 dans le cadre du permis d'eau de type « B » 2BE-EQE1926 de la Baffinland Iron Mines Corporation (Baffinland) (permis d'eau de type « B ») et du permis d'utilisation des terres 2 n° QL2-1910 (permis d'utilisation des terres) entre la QIA et Baffinland pour le projet Ege Bay (le projet).

Le champ d'application du permis d'eau de type « B » est axé sur les activités d'exploration et de forage et comprend des dispositions et des conditions concernant l'utilisation de l'eau, la gestion des déchets, la construction et l'exploitation de camps satellites, les programmes d'exploration et de forage, les mesures d'urgence en cas de déversement et la surveillance de l'environnement.

Au cours de l'année 2019, des activités mineures ont été menées dans le cadre du projet, limitées à la cartographie géologique et structurelle, à l'échantillonnage ponctuel et aux études géophysiques. Aucune activité n'a nécessité l'utilisation d'eau, le rejet d'eau ou le rejet de déchets comme le prévoit la licence de type « B ». Aucun camp d'exploration n'a été construit ou exploité pour le projet en 2019, tout le personnel impliqué dans les activités d'exploration étant basé dans le camp d'hébergement du site minier de Mary River. La surveillance menée en 2019 a consisté à enregistrer les observations de la faune dans la zone du projet et à documenter les cas d'utilisation des terres par les Inuits dans la zone du projet.

Étant donné qu'aucun développement ou terrassement n'a eu lieu dans la zone du projet à ce jour, aucun travail de remise en état n'a été effectué dans le cadre du permis d'utilisation des eaux de type « B ».

Comme indiqué dans le plan de travail 2020 de Baffinland, les activités d'exploration pour 2020 n'ont pas encore été finalisées; cependant, il est prévu que les activités comprennent au minimum la cartographie, l'échantillonnage et les études géophysiques et géochimiques des prospectifs sur les concessions minières des terres publiques de Baffinland et l'accord d'exploration IG-03 NTI. En attendant la délivrance d'un bail foncier de la part de QIA, les activités pour 2020 comprendront également l'installation et l'exploitation d'un camp d'exploration de 30 personnes, et éventuellement le début du forage d'exploration sur l'accord de prospection. Au fur et à mesure que des détails supplémentaires concernant le programme d'exploration 2020 seront disponibles, ces informations seront fournies à l'ONT, au Crown-Indigenous Relations and Northern Affairs Canada (CIRNAC) et à l'AQI avant le début des activités.

TABLE OF CONTENTS

EXECUTIVE SUMMARY (ENGLISH)	II
EXECUTIVE SUMMARY (FRENCH)	III
EXECUTIVE SUMMARY (INUKTITUT)	IV
1 INTRODUCTION	1
1.1 PURPOSE AND SCOPE	1
1.2 REGULATORY FRAMEWORK	1
2 EXPLORATION ACTIVITIES	3
2.1 EXPLORATION ACTIVITIES AND DRILLING PROGRAMS	3
3 MODIFICATIONS, INFRASTRUCTURE CHANGES AND CONSTRUCTION	4
4 WATER USE	5
4.1 QUANTITIES OF FRESHWATER USED FOR DOMESTIC PURPOSES.....	5
4.2 QUANTITIES OF FRESHWATER USED FOR DRILLING ACTIVITIES	5
5 ENVIRONMENTAL MONITORING	6
5.1 ENVIRONMENTAL MONITORING FOR DRILLING/TESTING ACTIVITIES	6
5.2 AIRCRAFT FLIGHTS	6
5.3 WILDLIFE LOGS	6
5.4 LAND USER LOGS	7
6 WASTE MANAGEMENT	8
7 REPORTED INCIDENTS	9
7.1 SPILLS	9
7.2 HEALTH & SAFETY INCIDENTS.....	9
8 RECLAMATION, CLOSURE AND FINANCIAL SECURITY	10
8.1 PROGRESSIVE AND FINAL RECLAMATION	10
8.2 CURRENT RESTORATION LIABILITY	10
9 PLANS, REPORTS AND STUDIES	11
9.1 SUMMARY OF STUDIES REQUESTED BY THE BOARD.....	11
9.2 REVISIONS TO PLANS, REPORTS AND MANUALS.....	11
9.3 SUMMARY OF FUEL STORAGE	11
9.4 INSPECTION AND COMPLIANCE REPORTS.....	11
9.4.1 CIRNAC Inspections.....	11
9.4.2 QIA Inspections.....	11
9.5 SUMMARY OF ARTESIAN FLOWS.....	11
10 PUBLIC CONSULTATIONS	12
11 2020 EXPLORATION ACTIVITIES	13

LIST OF TABLES

Table 1.1:	Current Permits, Approvals and Authorizations - 2019	2
Table 5.1:	Summary of Flight Compliance in 2019	6
Table 5.2:	Wildlife Observations in 2019	7
Table 5.3:	Land User Log - 2019	7
Table 9.1:	Management and Monitoring Plans for the Ege Bay Exploration Project	11

APPENDICES

APPENDIX A	Figures
APPENDIX B	Concordance Tables
APPENDIX C	NWB Annual Report Forms
APPENDIX D	Map 1 – Helicopter Flight Data
APPENDIX E	Ege Bay Photo Log

ABBREVIATIONS

ASR.....	Annual Security Review
Baffinland	Baffinland Iron Mines Corporation
CIRNAC.....	Crown Indigenous Relations and Northern Affairs Canada
NIRB	Nunavut Impact Review Board
NWB.....	Nunavut Water Board
QIA	Qikiqtani Inuit Association
WSCC	Workers' Safety and Compensation Commission

1 INTRODUCTION

1.1 PURPOSE AND SCOPE

This report to the Qikiqtani Inuit Association (QIA) and the Nunavut Water Board (NWB) has been prepared to summarize the 2019 exploration activities conducted under Baffinland Iron Mines Corporation's (Baffinland) Type 'B' Water Licence 2BE-EQE1926 (Type 'B' Water Licence) and the Land Use Licence 2 No. QL2-1910 (Land Use Licence) between the QIA and Baffinland for the Ege Bay Project (the Project). Concordance tables referencing where in this report annual reporting requirements outlined in the Land Use Licence and Type 'B' Water Licence have been met are presented in Appendix B.

The scope of the Type 'B' Water Licence focuses on exploration activities and includes provisions and conditions regarding water use, waste management, construction and operation of satellite camps, exploration drilling programs, spill contingency and environmental monitoring. Activities and data discussed in this report are summarized and referenced in the completed NWB Annual Report Forms, included as Appendix C of this report.

During 2019, there were minor activities carried out at the Project, limited to geological and structural mapping, grab sampling and geophysical surveys. There were no activities carried out that required the use of water, discharge of water or discharge of waste as regulated under the Type 'B' Water Licence. No exploration camps were constructed or operated for the Project in 2019, with all personnel involved with the exploration activities being based out of the Mary River Mine Site accommodation camp.

Figures 1 and 2 present the locations of the key areas associated with the Project where activities in 2019 were undertaken. Key areas involved with exploration activities in 2019 included the Mary River Mine Site (Mine Site), Steensby Port and the Ege Bay Project area.

1.2 REGULATORY FRAMEWORK

Although the key regulatory and legal documents that relate to this report are the Land Use Licence and the Type 'B' Water Licence, this report is presented in the context of other applicable regulatory authorizations and schedules for the Project. A list of the key regulatory permits, approvals and authorizations that allowed for the work to be completed at the Project in 2019 is presented in Table 1.1 below.

Table 1.1: Current Permits, Approvals and Authorizations - 2019

Permit or Licence No.	Licence Name	Status Update for 2019	Expiry
Nunavut Impact Review Board			
18EN026	Eqe Bay Project Screening	All works and activities have been screened by the Nunavut Impact Review Board (NIRB) and have been considered in the Project Screening decision. A NIRB Annual Report is submitted by March 31 st of each year that summarizes the status of the Project relative to the conditions outlined in the Project Screening.	N/A
Nunavut Water Board			
2BE-EQE1926	Type 'B' Water Licence	In good standing	April 3, 2026
Qikiqtani Inuit Association			
TBD	Inuit Owned Land – Land Use Lease	Application still being considered	N/A
QL2-1910	Inuit Owned Land - Land Use Licence	Compliance with the licence is outlined in the 2019 QIA and NWB Annual Reports submitted by March 31 st of each year.	March 30, 2021
	Inuit Impact and Benefit Agreement (IIBA)	Compliance with the agreement is outlined in the Annual IIBA Implementation Report submitted by March 31 st of each year.	N/A
Crown Land Use Permits			
N2019C0009	Steensby Land Use Permit	New Land Use Permit issued for Steensby in 2019. The previous permit N2014C0013 was closed and obligations transferred to the new Land Use Permit.	June 29, 2024

2 EXPLORATION ACTIVITIES

2.1 EXPLORATION ACTIVITIES AND DRILLING PROGRAMS

During 2019, exploration activities were based out of the Mary River Mine Site and consisted of day trips by helicopter to the Project, and were limited to mapping, surficial sampling and geophysical and geochemical surveys. No new satellite camps were constructed and/or operated to support exploration activities in 2019. There were no drilling activities, construction of sumps, use of water or discharge of water or waste to the receiving environment. Although Steensby Port was used as a refuelling location for helicopters transporting exploration field crews in 2019, the site remained closed throughout the year and was not used to house personnel.

3 MODIFICATIONS, INFRASTRUCTURE CHANGES AND CONSTRUCTION

There was no development, construction or earthworks activities initiated at the Project in 2019. Development of the Ege Bay Exploration Camp was deferred to 2020 due to the open Land Use Lease application with QIA, yet to be finalized.

A survival shack was mobilized to the exploration area on IG-03 Inuit Owned Land. It was slung, intact, from the Steensby Camp and placed on rocky ground to avoid any damage to the tundra. The shack was winterized and left in place for the 2020 field season (Figure 3). This was authorized via correspondence with the appropriate QIA representative. It is located at the following coordinates:

Easting:430790

Northing:7729380

UTM NAD83 18W

4 WATER USE

4.1 QUANTITIES OF FRESHWATER USED FOR DOMESTIC PURPOSES

During 2019, water was not withdrawn under the authorization of the Type 'B' Water Licence for domestic (camp) purposes. No satellite camps were operated to support exploration and drilling activities in 2019.

4.2 QUANTITIES OF FRESHWATER USED FOR DRILLING ACTIVITIES

During 2019, water was not withdrawn under the authorization of the Type 'B' Water Licence for drilling purposes.

5 ENVIRONMENTAL MONITORING

5.1 ENVIRONMENTAL MONITORING FOR DRILLING/TESTING ACTIVITIES

No environmental monitoring occurred as there were no drilling activities executed in 2019.

5.2 AIRCRAFT FLIGHTS

The Land Use Licence and NIRB Screening decision for the Project requires Baffinland to advise pilots of flight height restrictions when travelling to and from the Project site. Specifically, Baffinland is to notify pilots of the minimum flight altitude of 610 metres above ground level (magl) (except during landing, take-off or if there is a specific need for low-level flying) and that the aircraft maintain a vertical distance of 1,000 metres and a horizontal distance of 1,500 metres from any observed groups of migratory birds. Data from helicopter flight logs was analyzed to monitor compliance for the 2019 season.

Flight height data points were designated “compliant” when elevation requirements of a minimum flight altitude of 610 metres and a minimum flight altitude of 1,100 metres over the Snow Goose Management Area for the months of July and August were achieved, or where pilot’s discretionary rationale for deviating from flight heights was provided. Data points were designated “non-compliant” if they did not meet elevation requirements, and no explanation was given. Flights were compliant 90.1 % of the time and non-compliant 9.9 % of the time (Table 5.1).

Table 5.1: Summary of Flight Compliance in 2019

Total Flight Data Points	Compliant Data Points	Percent Compliance	Non-Compliant Data Points	Percent Non-Compliance
9,6594	8,696	90.1 %	958	9.9 %

Most of these flights are attributed to the deployment of prospecting teams and ground-based geophysical survey teams. As per authorization in the Land Use Licence, a 12-drum fuel cache was maintained in the Project area for refuelling purposes. Re-supply flights two and from Steensby Camp were required to position fuel in the Project area. Flight altitudes ranged from 0 to 2,200 metres. Map 1 in Appendix D shows the flight paths for the 2019 season.

5.3 WILDLIFE LOGS

During the 2019 field program, a total of seventy-six (76) animals were observed on thirty-seven (37) separate occasions in the Project area or in transit from Mary River to Ege Bay. Due to flight height requirements, the majority of the sightings are from the Ege Bay area, or coastal routes flown during low-ceiling conditions between Steensby Camp and Ege Bay. A summary of the sightings is presented in the following Table 5.2.

Table 5.2: Wildlife Observations in 2019

Species	Number of Observations
Swans	8
Arctic fox	1
Caribou	38
Polar Bear	5
Walrus ^a	23
Beluga	1
Total	76

^a Walruses were observed on multiple occasions in July and August at Grant-Suttie Bay, Steensby Camp, and the mouth of Rowley River.

5.4 LAND USER LOGS

During 2019, one (1) hunting camp and one (1) group of hunters were spotted on the land from the helicopter. No interaction, interference or conflict from Project activities were observed or reported.

Table 5.3: Land User Log - 2019

Date	Easting NAD83 Zone 18W	Northing NAD83 Zone 18W	Comments
2019-08-16	428000	7737300	Hunting Camp, tent on island in Grant-Suttie Bay
2019-08-17	428000	7737300	Hunting Camp, tent on island in Grant-Suttie Bay
2019-08-18	439700	7734200	Hunters (unknown number) hunting/transiting valley

6 WASTE MANAGEMENT

During 2019, no camps were installed or operated at the Project. Therefore, waste management is not required at this time. All waste generated by field crews (food scraps, lunch bags/wrappers, etc.) was returned to the Mary River camp for disposal on a daily basis.

7 REPORTED INCIDENTS

7.1 SPILLS

There were no spills observed or reported by Baffinland in 2019 at the Project.

7.2 HEALTH & SAFETY INCIDENTS

No health & safety incidents were reported to the QIA and/or the Workers' Safety and Compensation Commission (WSCC) that pertained to the Project activities in 2019.

8 RECLAMATION, CLOSURE AND FINANCIAL SECURITY

8.1 PROGRESSIVE AND FINAL RECLAMATION

No infrastructure, construction or earthworks activities were completed in 2019. Field work conducted in 2019 was limited to low impact assessment of the resource potential, including geological and structural surficial grab sampling, geophysical surveying. As such, there is no progressive or final reclamation to report on. Details on the progressive and final reclamation for the Project are outlined in the Ege Bay Exploration Program Closure and Reclamation Plan (BAF-PH1-400-P16-0003).

8.2 CURRENT RESTORATION LIABILITY

There is currently no financial security held for the project by the QIA or NWB under the Type B Licence. Baffinland is in discussion with QIA to determine the value of reclamation security that would be required for the issuance of a Land Use Lease and the development of the camp and associated infrastructure.

9 PLANS, REPORTS AND STUDIES

9.1 SUMMARY OF STUDIES REQUESTED BY THE BOARD

Due to the limited scope of work executed in 2019, studies under the Type 'B' Water Licence were not required.

9.2 REVISIONS TO PLANS, REPORTS AND MANUALS

Final versions of the management plans developed for the Type 'B' Water Licence were submitted to the NWB in February, 2019. Table 9.1 provides a complete list of management plans for the Project.

Table 9.1: Management and Monitoring Plans for the Ege Bay Exploration Project

Management Plan	Current Version	Version Date
Environmental Protection Plan	Revision 0	February 2019
Spill Contingency Plan	Revision 0	February 2019
Closure and Reclamation Plan	Revision 0	February 2019
Inspection and Monitoring Plan	Revision 0	February 2019
Waste Management Plan	Revision 0	February 2019

9.3 SUMMARY OF FUEL STORAGE

There is currently no fuel storage at the Project.

9.4 INSPECTION AND COMPLIANCE REPORTS

9.4.1 CIRNAC Inspections

During 2019, Baffinland did not receive any inspection and/or compliance reports from CIRNAC Water Resources Officers (the Inspector) outlining concerns pertaining to the scope of the Type 'B' Water Licence.

9.4.2 QIA Inspections

During 2019, Baffinland did not receive any inspections and/or compliance reports from QIA outlining concerns pertaining to scope of the Land Use Licence.

9.5 SUMMARY OF ARTESIAN FLOWS

No drilling activity occurred in 2019, therefore no artesian flows were possible.

10 PUBLIC CONSULTATIONS

Throughout 2019, Baffinland continued to consult with the North Baffin communities and organizations regarding exploration activities at the Project. Due to the limited scope of work executed in 2019, community visits were not scheduled as there were no relevant project updates. Though the course of the Land Use Licence application with the QIA, a letter of intent for the 2019 season was sent to the affected communities of Igloolik and Sanirajak. Consultation activities are planned to continue in 2020, and will be expanded should the proposed construction of the camp and supporting infrastructure commence in 2020.

11 2020 EXPLORATION ACTIVITIES

The 2020 Work Plan for the Mary River Project was prepared and provided by Baffinland to relevant parties on November 1, 2019, including planned exploration and geotechnical drilling activities.

The scope of Baffinland's Type 'B' Water Licence and Land Use Licence allows for Baffinland to continue to undertake exploration activities within the Project area including mineral claims staked on crown land and IG-02 and the NTI Exploration Agreement Subarea C on IG-03.

Exploration activities for 2020 have not yet been finalized however it is anticipated that activities at a minimum will include mapping, sampling and geophysical and geochemical surveys of prospects in the Project area. Notification will be provided to the NWB, CIRNAC and the QIA prior to the commencement of exploration and/or drilling activities.

During 2020, Baffinland plans to establish a new exploration camp within the Ege Bay Area (refer to Figure 2) to support a drilling program planned for either late summer 2020 or early 2021, as well as other low impact exploration activities within the Ege bay Area. The current Type 'B' Water Licence issued in April 2019 is inclusive of the scope of these activities. A Land Use Lease application is still undergoing review and discussion with QIA, that would allow for the development of the camp and exploration drilling on Inuit owned land.

APPENDIX A

Figures



SAVED: C:\Users\katie.mcguire\Documents\4 - Maps\Reporting\5 - Eque Bay\Type B 2019\BIM_Fig 1 Project Location.mxd; 26-Mar-20

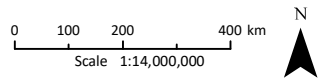
LEGEND

- ⊙ Mary River Project Facility Location
- ▲ Exploration Program Location
- - - North Baffin Planning Region
- - - Nunavut Settlement Area
- Qikiqtani Region

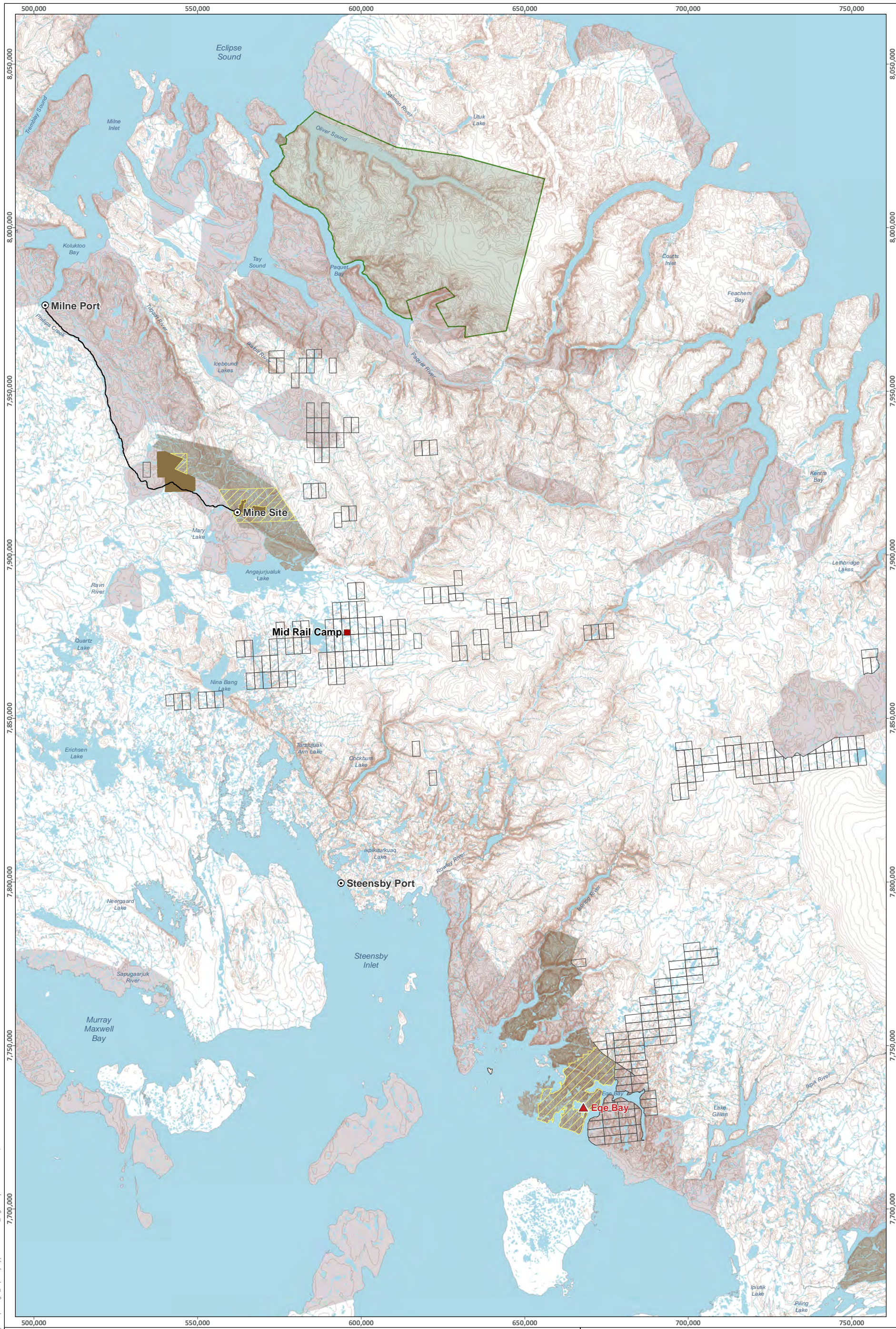
ᐃᑦᐅ ᐅᑦᑦᑦᑦᑦᑦᑦᑦᑦᑦᑦᑦᑦᑦ ᑦᐅᑦᑦᑦᑦᑦᑦᑦᑦᑦᑦᑦᑦᑦᑦ EQE BAY EXPLORATION

Eque Bay Exploration Program

Projection: NAD 1983 STATISTICS CANADA LAMBERT.
Base Map: © Queen's Printer for Ontario, 2020.



ᑎᑎᑦᑦᑦᑦᑦᑦᑦᑦᑦᑦᑦᑦᑦᑦ
FIGURE 1



SAVED: C:\Users\kellam\OneDrive\Documents\4 - Impact Reporting\S_Ege Bay\Type B 2019\BIM - Fig 2 Project Activities.mxd; 28-Mar-20

	Exploration Program Location		Sirmilik National Park		Mineral Claims Held by Baffinland
	Mary River Project Facility Location		IOL Surface Only		NTI Exploration Area
	Mid Rail Camp Location		IOL Surface and Subsurface		Crown Land
	Milne Inlet Tote Road		Mining Lease Boundary		
	Contour (20 m Interval)				

ᐃᑦᑭ ᐅᑦᑦᑦᑦᑦᑦᑦᑦᑦᑦ ᑦᑦᑦᑦᑦᑦᑦᑦᑦᑦ EQE BAY EXPLORATION

Ege Bay Activities Overview

Projection: NAD 1983 UTM ZONE 17N.
Base Map: © Queen's Printer for Ontario, 2020.

0 5 10 20 30 km
Scale 1:1,100,000

ᑎᑎᑦᑦᑦᑦᑦᑦᑦᑦᑦᑦ
FIGURE 2



SAVED: C:\Users\kellam\Documents - MapInfo\Reporting\S_Esp_BayType B 2019BIM_Fig 2 Project Activities_INK.mxd, 25-Mar-20

ጠቅላላ ስራዎች			
▲	ግንባታ ስራ ላይ ለሚገኙ የግንባታ ቦታዎች	■	የግንባታ ስራ ላይ ለሚገኙ የግንባታ ቦታዎች
○	ለግንባታ ስራ ላይ ለሚገኙ የግንባታ ቦታዎች	■	የግንባታ ስራ ላይ ለሚገኙ የግንባታ ቦታዎች
■	የግንባታ ስራ ላይ ለሚገኙ የግንባታ ቦታዎች	■	የግንባታ ስራ ላይ ለሚገኙ የግንባታ ቦታዎች
—	የግንባታ ስራ ላይ ለሚገኙ የግንባታ ቦታዎች	■	የግንባታ ስራ ላይ ለሚገኙ የግንባታ ቦታዎች
—	ግንባታ ስራ ላይ ለሚገኙ የግንባታ ቦታዎች (2019 ስራ ለክፍያ)	■	የግንባታ ስራ ላይ ለሚገኙ የግንባታ ቦታዎች
■	የግንባታ ስራ ላይ ለሚገኙ የግንባታ ቦታዎች	■	የግንባታ ስራ ላይ ለሚገኙ የግንባታ ቦታዎች
■	የግንባታ ስራ ላይ ለሚገኙ የግንባታ ቦታዎች	■	የግንባታ ስራ ላይ ለሚገኙ የግንባታ ቦታዎች
■	የግንባታ ስራ ላይ ለሚገኙ የግንባታ ቦታዎች	■	የግንባታ ስራ ላይ ለሚገኙ የግንባታ ቦታዎች
■	የግንባታ ስራ ላይ ለሚገኙ የግንባታ ቦታዎች	■	የግንባታ ስራ ላይ ለሚገኙ የግንባታ ቦታዎች

<p>ግንባታ ስራ ላይ ለሚገኙ የግንባታ ቦታዎች</p> <p>ግንባታ ስራ ላይ ለሚገኙ የግንባታ ቦታዎች</p>	
<p>ግንባታ ስራ ላይ ለሚገኙ የግንባታ ቦታዎች</p> <p>ግንባታ ስራ ላይ ለሚገኙ የግንባታ ቦታዎች</p>	<p>ግንባታ ስራ ላይ ለሚገኙ የግንባታ ቦታዎች</p> <p>ግንባታ ስራ ላይ ለሚገኙ የግንባታ ቦታዎች</p>
<p>ግንባታ ስራ ላይ ለሚገኙ የግንባታ ቦታዎች</p> <p>ግንባታ ስራ ላይ ለሚገኙ የግንባታ ቦታዎች</p>	<p>ግንባታ ስራ ላይ ለሚገኙ የግንባታ ቦታዎች</p> <p>ግንባታ ስራ ላይ ለሚገኙ የግንባታ ቦታዎች</p>
<p>ግንባታ ስራ ላይ ለሚገኙ የግንባታ ቦታዎች</p> <p>ግንባታ ስራ ላይ ለሚገኙ የግንባታ ቦታዎች</p>	<p>ግንባታ ስራ ላይ ለሚገኙ የግንባታ ቦታዎች</p> <p>ግንባታ ስራ ላይ ለሚገኙ የግንባታ ቦታዎች</p>
<p>ግንባታ ስራ ላይ ለሚገኙ የግንባታ ቦታዎች</p> <p>ግንባታ ስራ ላይ ለሚገኙ የግንባታ ቦታዎች</p>	<p>ግንባታ ስራ ላይ ለሚገኙ የግንባታ ቦታዎች</p> <p>ግንባታ ስራ ላይ ለሚገኙ የግንባታ ቦታዎች</p>



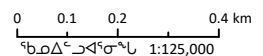
ᄃᄃᄃᄃᄃ ᄃᄃᄃᄃᄃ

- ᄃᄃᄃᄃ ᄃᄃᄃᄃᄃᄃᄃᄃ (20ᄃᄃᄃ ᄃᄃᄃᄃᄃᄃᄃ)
 - ▲ ᄃᄃᄃᄃᄃᄃᄃᄃ ᄃᄃᄃᄃ ᄃᄃᄃᄃ ᄃᄃᄃᄃᄃᄃᄃᄃ ᄃᄃᄃᄃᄃᄃᄃ
- E: 430790
 N: 7729380
 UTM NAD83 18W

ΔΥΡ ΔΥΛΩ-ΥΓ ᄃᄃᄃᄃᄃᄃᄃᄃ ᄃᄃᄃᄃᄃᄃᄃᄃ EQE BAY EXPLORATION

ᄃᄃᄃᄃᄃᄃᄃᄃ ᄃᄃᄃᄃ ᄃᄃᄃᄃ ᄃᄃᄃᄃᄃᄃᄃᄃ ᄃᄃᄃᄃᄃᄃᄃ

ᄃᄃᄃᄃ: NAD 1983 UTM ZONE 18N.
 ᄃᄃᄃᄃᄃᄃᄃ ᄃᄃᄃᄃᄃᄃᄃ ᄃᄃᄃᄃᄃᄃ 2019.
 © Queen's Printer for Ontario, 2020.



ᄃᄃᄃᄃᄃᄃᄃᄃᄃ
FIGURE

3

APPENDIX B

Concordance Tables

Table 1: Concordance Table – Type ‘B’ Water Licence 2BE EQE1926

Type B Water Licence 2BE-EQE1926		2019 QIA and NWB Annual Report for Exploration and Geotechnical Activities	
Condition No.	Condition	Report Reference/Response	
Part B. General Conditions <i>The Annual Report referred to in Part B, Item 2 shall include:</i>			
2	The Licensee shall file an Annual Report on the Appurtenant Undertaking with the Board no later than March 31st of the year following the calendar year being reported, containing the following information:	See below	Annual Report was submitted on March 31, 2020.
a	A summary report of Water use and Waste disposal activities;	Section 4 Section 6	Water Use Waste Management
b	Quantity of Water (in cubic metres/day) obtained for domestic and other purposes from sources on, in or flowing through Inuit-owned lands for the reporting period;	Section 4	Water Use
c	Quantity of Water (in cubic metres/day) obtained for domestic and other purposes from sources on, in or flowing through Crown Lands reporting period;	Section 4	Water Use
d	Quantity of Waste disposed of on on-site Waste disposal facility;	Section 6	Waste Management
e	Quantity of Waste backhauled to approved facility for disposal;	Section 6	Waste Management
f	A list of unauthorized discharges and a summary of follow-up actions taken;	Section 4 Section 7.1	Water Use Spills
g	Any revisions to the management plans, as required by Part B, Item 7, submitted in the form of an Addendum;	N/A	No revisions to management plans
h	A description of all progressive and or final reclamation work undertaken, including photographic records of site conditions before, during and after completion of operations;	Section 8	Reclamation, Closure and Final Security
i	Report all artesian flow occurrences as required under Part F, Item 3;	Section 9.5	Summary of Artesian Flows
j	A summary of all information requested and results of the Monitoring Program;	Section 5.1	Environmental Monitoring for Drilling/Testing
k	Details pertaining to locations of sump(s) and drill holes;	Section 2.1	Exploration Activities and Drilling Programs
l	GPS co-ordinates (in degrees, minutes and seconds of latitude and longitude) for the locations of all temporary camps established in support of the project if the actual coordinates differ from that provided in the application;	Section 3	Modifications, Infrastructure Changes and Construction
m	A summary, including photographic records before, during and after any relevant construction activities or Modifications and/or major maintenance work carried out on facilities under this Licence and an outline of any work anticipated for the next year;	Section 3	Modifications, Infrastructure Changes and Construction
n	Detailed discussion on the performance, installation, and evaluation, including the use of photographic record, of the primary and secondary containment functions used in fuel storage to safeguard impacts to freshwaters;	N/A	No fuel storage at the Project in 2019
o	A summary of public consultation/participation, describing consultation with local organizations and residents of the nearby communities, if any were conducted;	Section 10	Public Consultations
p	Any other details on Water use or Waste disposal requested by the Board by the 1st November of the year being reported.	N/A	No other details on water use or waste disposal was requested by the Board by November 1, 2019.

Table 2: Concordance Table – Land Use Licence 2 - QL2 1910

Land Use Licence 2 – QL2-1910		2019 QIA and NWB Annual Report for Exploration and Geotechnical Activities	
Condition No.	Condition	Report Reference/Response	
Schedule 1 - Annual Reporting Requirements			
8	The Licensee shall submit interim reports in text and map form by March 31, 2020 and a Final Report March 31 2021 at the conclusion of the term of this licence, showing:	See below	Annual Reports were submitted on March 31, 2019.
a	All lands occupied and used during this land use operation, including details on all activities conducted on the lands	Section 2	Exploration Activities and Drilling Programs
b	Before and after digital photographs of land use sites	N/A	
c	If applicable, aircraft flight paths, number of flights (include dates/time), and flight elevation.	Section 5.2 Appendix D	Aircraft Flights
d	Wildlife sightings including copies of all wildlife logs	Section 5.3	Wildlife Logs
e	Inuit land use encountered during operations	Section 5.4	Land User Logs
f	Land use conflicts encountered during operations	Section 5.4	Land User Logs

APPENDIX C

NWB Annual Report Forms

NWB Annual Report

Year being reported: 2019

License No: Issued Date:
 Expiry Date:

Project Name:

Licensee:

Mailing Address:

Name of Company filing Annual Report (if different from Name of Licensee please clarify relationship between the two entities, if applicable):

General Background Information on the Project (*optional):

Licence Requirements: the licensee must provide the following information in accordance with

Part B Select

A summary report of water use and waste disposal activities, including, but not limited to: methods of obtaining water; sewage and greywater management; drill waste management; solid and hazardous waste management.

Water Source(s):	<input type="text" value="Refer to Section 4."/>	
Water Quantity:	<input type="text" value="29"/> cu.m/day	Quantity Allowable Domestic (cu.m)
	<input type="text" value="-"/>	Actual Quantity Used Domestic (cu.m)
	<input type="text" value="270 cu.m/day"/>	Quantity Allowable Drilling (cu.m)
	<input type="text" value="-"/>	Total Quantity Used Drilling (cu.m)

Waste Management and/or Disposal

- Solid Waste Disposal
- Sewage
- Drill Waste
- Greywater
- Hazardous
- Other:

Additional Details:

A list of unauthorized discharges and a summary of follow-up actions taken.

Spill No.: (as reported to the Spill Hot-line)
 Date of Spill:
 Date of Notification to an Inspector:
 Additional Details: (impacts to water, mitigation measures, short/long term monitoring, etc.)

Revisions to the Spill Contingency Plan

Additional Details:

Revisions to the Abandonment and Restoration Plan

Additional Details:

Progressive Reclamation Work Undertaken

Additional Details (i.e., work completed and future works proposed)

Results of the Monitoring Program including:

The GPS Co-ordinates (in degrees, minutes and seconds of latitude and longitude) of each location where sources of water are utilized;

Additional Details:

The GPS Co-ordinates (in degrees, minutes and seconds of latitude and longitude) of each location where wastes associated with the licence are deposited;

Additional Details:

Results of any additional sampling and/or analysis that was requested by an Inspector

No additional sampling requested by an Inspector or the Board

Additional Details: (date of request, analysis of results, data attached, etc.)

Any other details on water use or waste disposal requested by the Board by November 1 of the year being reported.

No additional sampling requested by an Inspector or the Board

Additional Details: (Attached or provided below)

Any responses or follow-up actions on inspection/compliance reports

Select

Additional Details: (Dates of Report, Follow-up by the Licensee)

Refer to Section 9.4.

Any additional comments or information for the Board to consider

The 2019 QIA and NWB Annual Report for Ege Bay Project provides further details on water use and waste disposal, fuel storage, inspections, environmental monitoring programs, updates to plans, progressive reclamation work and consultations.

Date Submitted:

March 31, 2020

Submitted/Prepared by:

Christopher Murray

Contact Information:

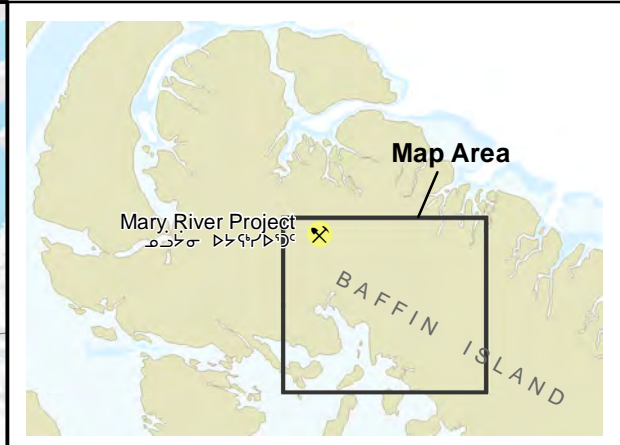
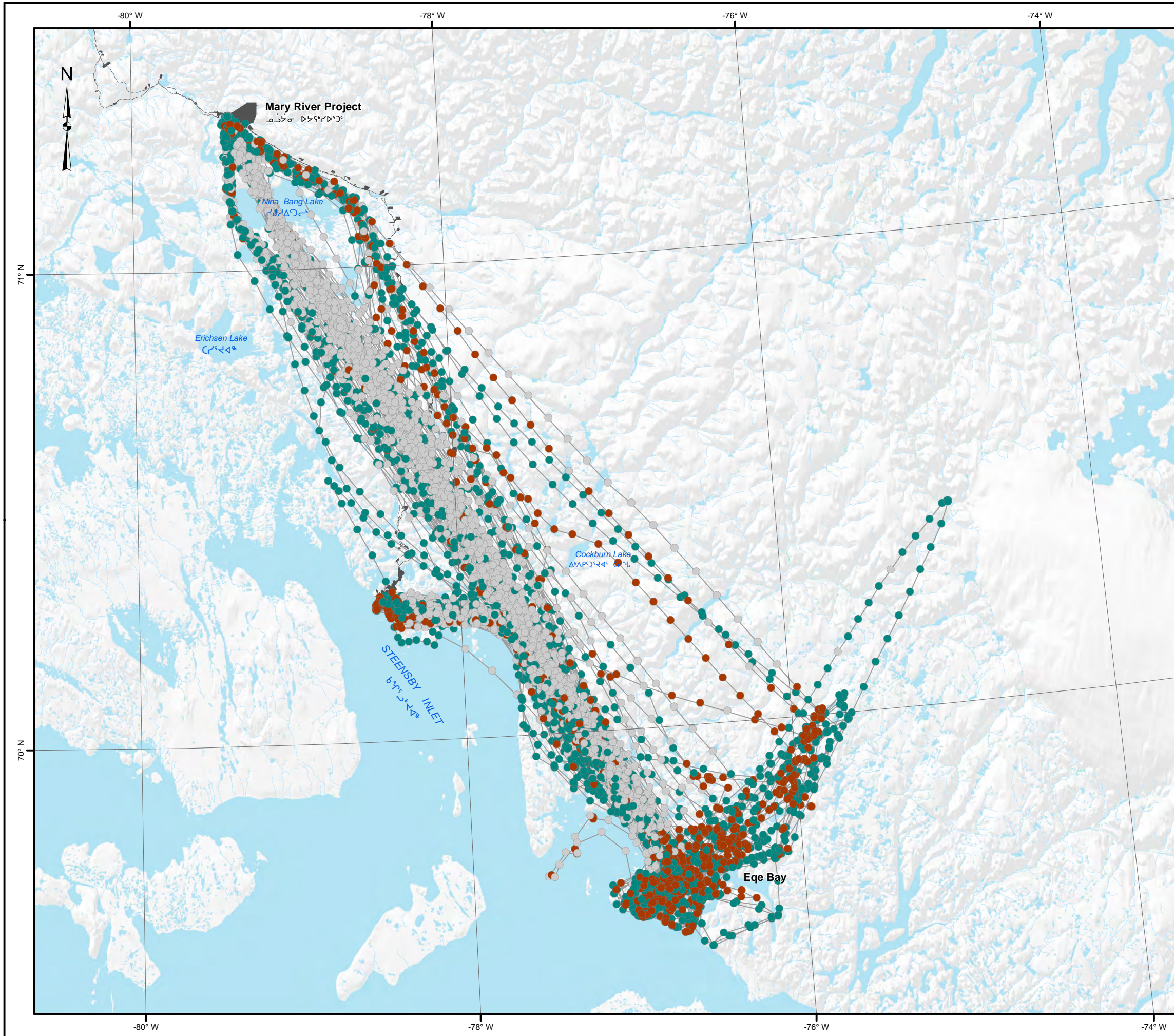
Tel: (416) 364-8820 ext. 5072

Fax:

email: christopher.murray@baffinland.com

APPENDIX D

Map 1 – Helicopter Flight Data



- LEGEND** ᑭᑭᑦᑭᑦᑭᑦ
- Non-Compliant Flights (GPS Points) Below 650 magl
 - Compliant - Low Level Flight Required - Flights (GPS Points) Below 650 magl
 - Compliant Flights (GPS Points) Above 650 magl
 - Helicopter Transit
 - Potential Development Area

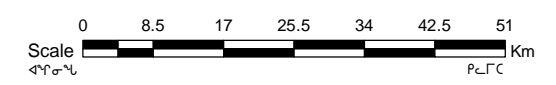
NOTES ᑭᑭᑦᑭᑦᑭᑦ

Map Projection: North American Datum UTM Zone 17N.

Helicopter flight data and tickets collected and provided by Canadian Helicopters (2019).

Potential Disturbance Area provided by Knight Piesold (July, 2017).

This document is not an official land survey and the spatial data presented is subject to change without notice.



Overview Map of Helicopter Flight Paths Associated with Ege Bay from May to September, 2019



Date: 2020-03-31
MAP 1

Path: S:\Data\Project_Data\Baffinland_Spatial\2019_SpatialData\Mapping\Reporting\Monitoring\Map1_EgeBayHelicopterOverview_20200311.mxd

APPENDIX E

Eqe Bay Photo Log



PHOTO 1 – Banded Iron Formation at Ege Bay



PHOTO 2 – Ege Bay – Summer 2019



PHOTO 3 – Ege Bay – Summer 2019



PHOTO 4 – Geological structure observed at Ege Bay



PHOTO 5 – Geophysicists performing MAG-VLF survey



PHOTO 6 – Eqe Bay – Summer 2019



PHOTO 7 – Geological field observations Ege Bay

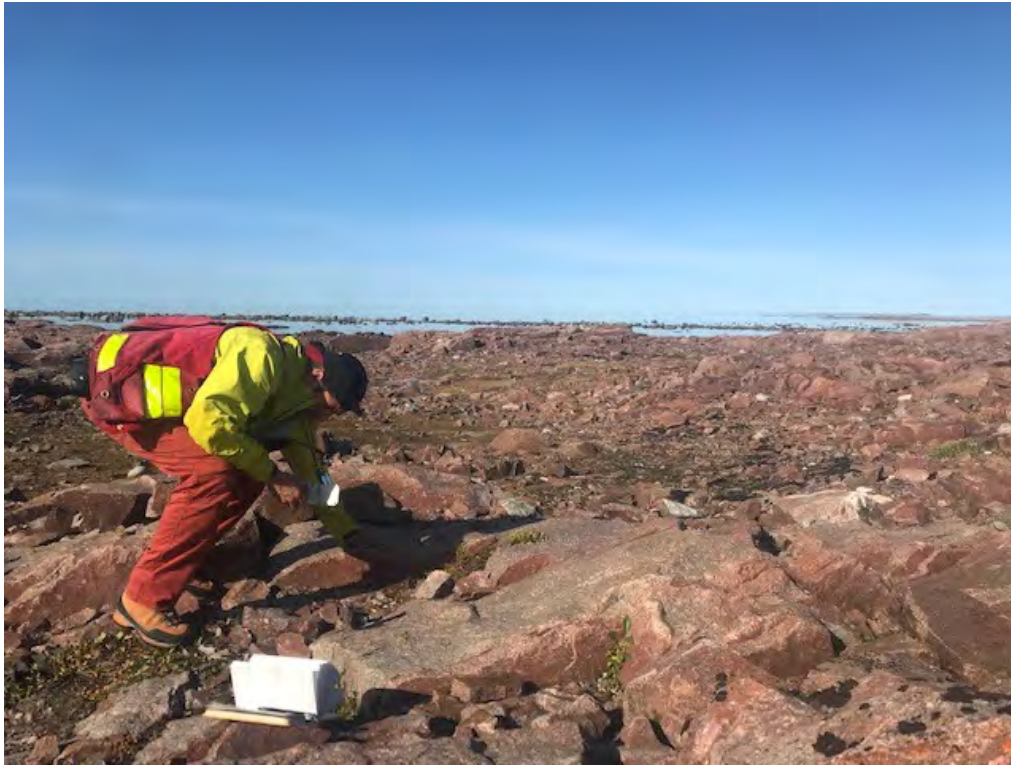


PHOTO 8 – Structural field measurements being taken at Eqe Bay



PHOTO 9 – Eqe Bay Survival Shack Structure